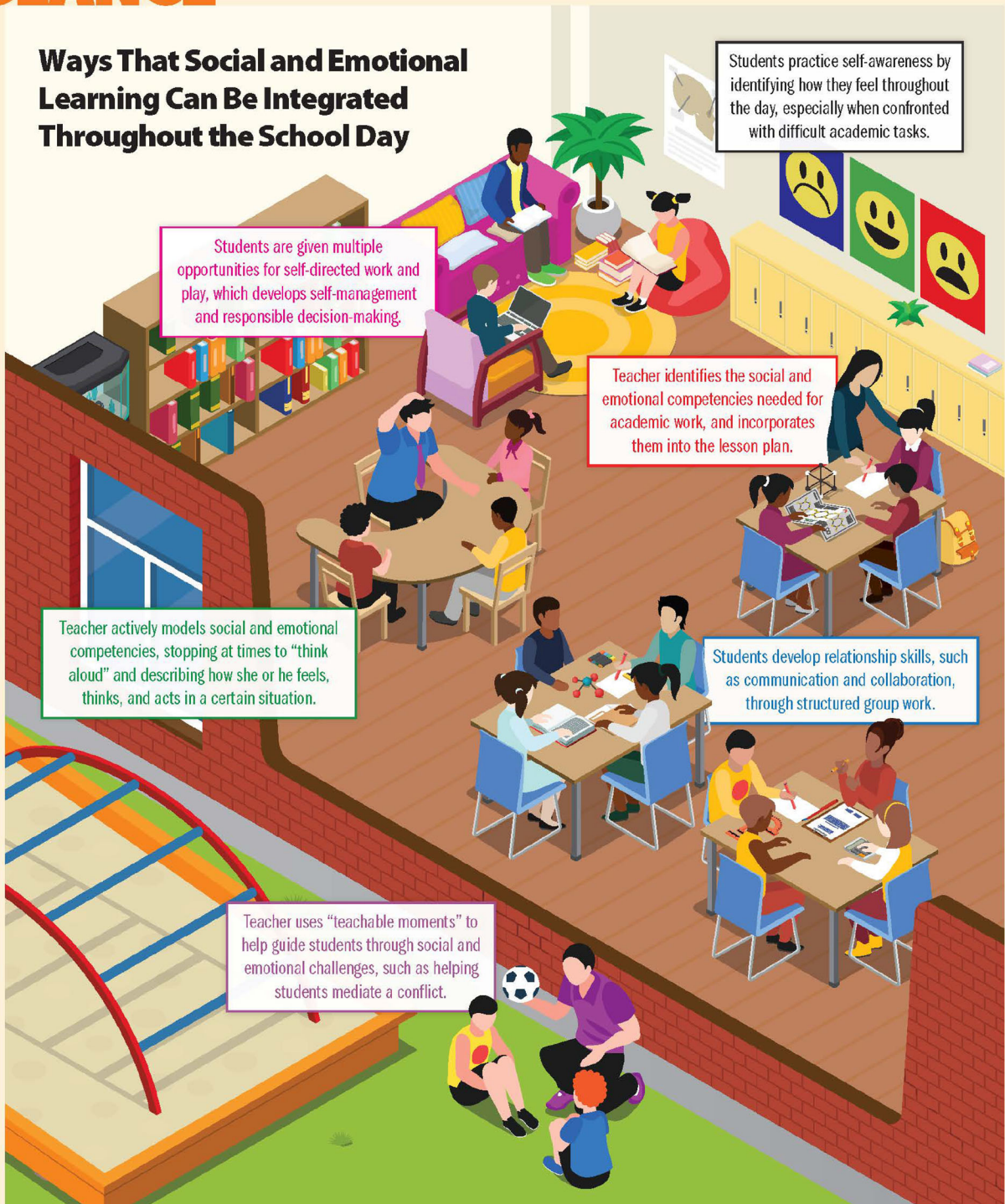


AT A GLANCE

Ways That Social and Emotional Learning Can Be Integrated Throughout the School Day

Social, emotional, and academic development are intertwined. Students benefit when educators weave social and emotional learning (SEL) throughout the school day, building, and curriculum.



Source: Learning Policy Institute (2018). *Preparing Teachers to Support Social and Emotional Learning*. <https://bit.ly/3zclMAJ>

To illustrate how one school integrates SEL, the Learning Policy Institute created this graphic as part of a case study of Lakewood Elementary School in Sunnyvale, California. The school developed holistic SEL approaches in partnership with the Center for Reaching & Teaching the Whole Child and San Jose State University.

How does your school integrate SEL? Discuss these reflection questions with your colleagues.

- Which strategies shown here resonate with you and why?
- Which strategies would you like your school(s) to try?
- Which staff need to be involved?
- What kind of support do they need?
- What else can you do to integrate SEL and academics?
- What challenges do you anticipate, and how can professional learning help?