

Instructional Coaches and Principals: An Essential Partnership for School Success



Webinar
April 13, 2023

If you can see the slide and hear the music, you are all set.

Welcome! We will begin shortly.

All attendees are muted upon entry.
Please use the chat feature for comments and questions during the webinar.

Thank you for joining us

The webinar will be recorded and available.

All webinar registrants will receive a follow-up email that will include the webinar slide deck, recording, and other resources mentioned during the presentation.

Please introduce yourselves in the chat box

- Your name
- Your location
- Your role in the educational sector



[@learningforward](https://twitter.com/learningforward)

Let's get started



Sharron Helmke

Vice President
Professional Services
Learning Forward

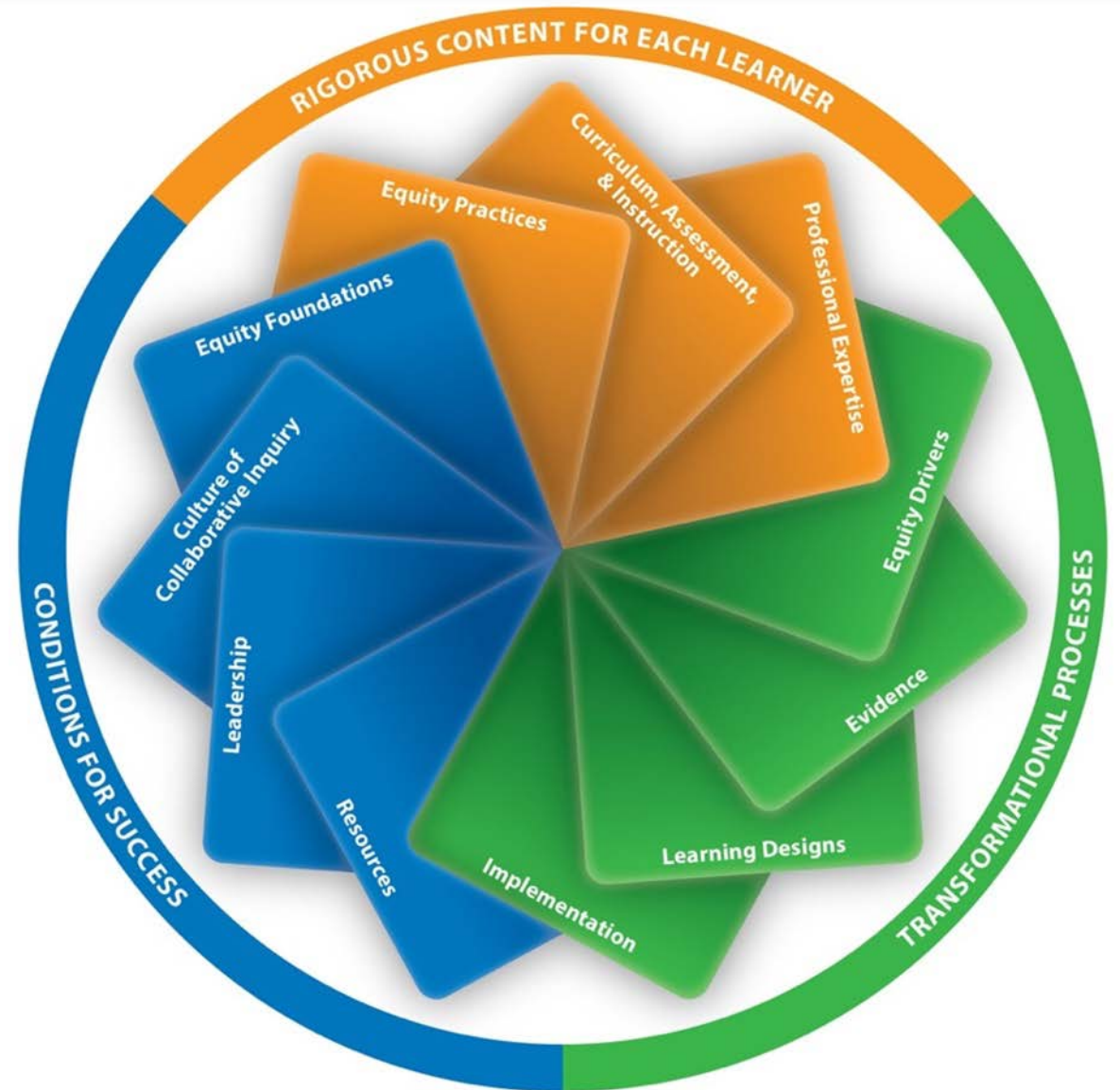


Participants will ...

- See how learning-focused partnerships between principals and instructional coaches lead to teacher and student growth.
- Examine the characteristics of effective building-level instructional coaching programs.
- Gain strategies for effective communication and feedback between the principal and coach.
- See how principals support coaching through the allocation of time and resources.
- Gather ideas for making coaching a key part of teacher retention and support strategies.

Standard frames – Where are we?

- Rigorous content for each learner
- Transformational processes
- Conditions for success



Two campuses, two different experiences



Two sides of the same coin



Panel discussion



Crystal Cooper

Principal

Starling
Elementary School
Gwinnett County
Public Schools

Grayson, GA



DeVonya Prather

Instructional Coach

Gwinnett County
Public Schools
Suwanee, GA



**Larissa McCoy
Mitti**

Principal

Leto High School
Hillsborough County
Public Schools

Tampa, FL



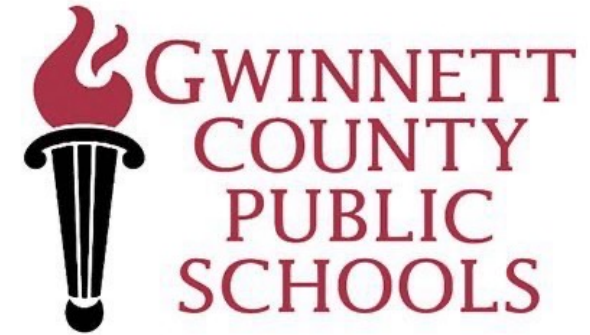
**Robyn Sullivan-
Jackson**

Literacy coach, Reading
Department head, & mentor

Leto High School
Hillsborough County
Public Schools

Tampa, FL

The Intersection of Building a Blueprint for High-Quality Instruction



Crystal Cooper

and

DeVonya Prather

STRONG Principal-Coach Relationship

<p>Built on Relationship</p> <ul style="list-style-type: none">• Trust and Rapport• Coherence and Collaboration• Remove Barriers• SEL and Classroom Management	<p>Anchored in Continuous Communication</p> <ul style="list-style-type: none">• Principal Voice• One Voice-Clarity• Proactive and Reactive• Collaborative and Continuous
<p>Focused on Student Outcomes</p> <ul style="list-style-type: none">• Coaching Cycle• District-Focused• School Improvement• MTSS and Actionable	<p>Makes Impact on Teacher Support and Collegiality</p> <ul style="list-style-type: none">• Data-driven Toward Professional Development for All• Resource Collectors• Best Practices• Goal-Oriented• Morale Leveler

A Transparent Moment of Shifting



Leadership Quote

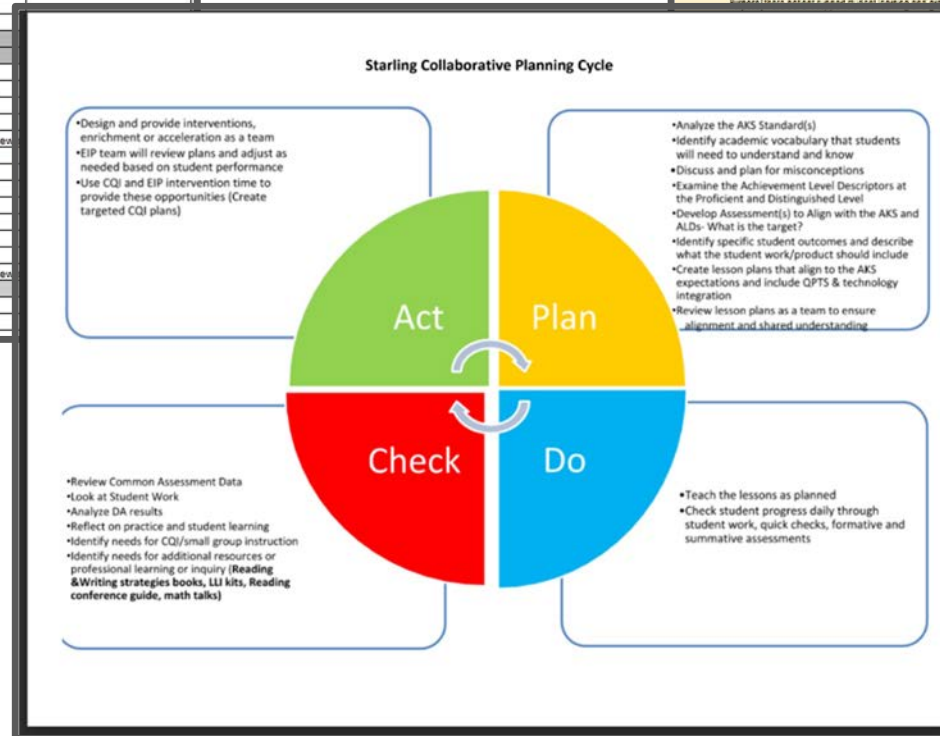
**great leaders
don't let their
mistakes go
unresolved**

@reallygreatsite

Starling Elementary School Artifacts

u	Date	Time	Topic	Presenter	Location
Wednesday	1/5/22		Teacher Workday/PL		
Thursday	1/6/22	3:15	Lesson & Unit planning		
Thursday	1/13/22	3:15	Leading & Learning	Various	Various
Thursday	1/20/22	3:15			
Thursday	1/26/22	3:15	RBES Midyear Sign off Faculty Meeting	Admin	cafe
Thursday	1/20/22	3:15	PBIS	Dunn	J. Barnes's room
Thursday	1/27/22		DLD/Planning/Mentor& Mentee		
Thursday	1/27/22	3:15	SpEd Dept Mtg	Dunham	Media Center
Tuesday	2/1/22	3:15	Kid talks		
Thursday	2/3/22	3:15	Faculty Meeting		
Tuesday	2/8/22	3:15	Leading & Learning		
Thursday	2/10/22	3:15			
Tuesday	2/15/22	3:15			
Thursday	2/17/22		Holiday		
Tuesday	2/22/22	3:15	Mentor-Mentee	Blackman & H. Lewis	PL Room
Thursday	2/24/22	3:15	SpEd Dept Mtg	Dunham	Media Center
Tuesday	3/1/22		No meeting due to conference		
Wednesday	3/2/22		DLD/Conference		
Thursday	3/3/22		Early Release/Conferences		
Tuesday	3/8/22	3:15	Leading & Learning		
Thursday	3/10/22	3:15	Pink/Blue Shuffle	Admin	Media Center
Tuesday	3/15/22				
Thursday	3/17/22	3:15	PBIS	Dunn	J. Barnes room
Tuesday	3/22/22		DLD/Planning/Mentor& Mentee		
Thursday	3/24/22	3:15	SpEd Dept Mtg	Dunham	Media Center
Tuesday	3/29/22				
Thursday	3/31/22				
Tuesday	4/5/22		Spring Break		
Thursday	4/7/22		Spring Break		
Tuesday	4/12/22	3:15	GMAS Training 3-5	Dunn	
Thursday	4/14/22	3:15	De-Escalation Meeting and SEL meeting	dunham/Cooper	
Tuesday	4/19/22		Faculty Meeting	Cooper	
Thursday	4/21/22	3:15	PBIS	Dunn	
Tuesday	4/26/22	3:15	Mentor-Mentee	Blackman & H. Lewis	
Thursday	4/28/22	3:15	SpEd Dept Mtg	Dunham	
Tuesday	5/3/22	3:15	ILT/Kid talks	Admin	
Thursday	5/5/22	3:15	Teacher Appreciation- no meeting!!		
Tuesday	5/10/22	3:15	Leading & Learning	Various	
Thursday	5/12/22	3:15	Lesson Planning	CLTs	
Tuesday	5/17/22	3:15	SS/SC	CLTs	
Thursday	5/19/22	3:15	PBIS	Dunn	
Tuesday	5/24/22	3:15	Mentor-Mentee	Blackman & H. Lewis	
Wednesday	5/25/22		Last Day of School		
Thursday	5/26/22				
Friday	5/27/22				

QPTS		QPTS Performance Standards		Starling Collaborative Planning Cycle		Collaborative Learning Team Indicators	
<input type="checkbox"/>	Assessment and Feedback	<input checked="" type="checkbox"/>	Professional Knowledge	<input checked="" type="checkbox"/>	Plan	<input type="checkbox"/>	Team Structure
<input type="checkbox"/>	Background and Prior Knowledge	<input checked="" type="checkbox"/>	Instructional Planning	<input type="checkbox"/>	Do	<input type="checkbox"/>	Team Accountability
<input checked="" type="checkbox"/>	Collaborate	<input type="checkbox"/>	Instructional Strategies	<input type="checkbox"/>	Check	<input type="checkbox"/>	Team Norms
<input type="checkbox"/>	Compare and Contrast	<input type="checkbox"/>	Differentiated Instruction	<input type="checkbox"/>	Act	<input checked="" type="checkbox"/>	Team Continuous Quality Improvement
<input checked="" type="checkbox"/>	Literacy	<input type="checkbox"/>	Assessment Strategies				
<input checked="" type="checkbox"/>	Modeling and Practice	<input type="checkbox"/>	Assessment Uses				
<input type="checkbox"/>	Non-Verbal Representation	<input type="checkbox"/>	Positive Learning Environment				
<input type="checkbox"/>	Problem-Solving	<input checked="" type="checkbox"/>	Academically Challenging Environment				
<input type="checkbox"/>	Questioning	<input type="checkbox"/>	Professionalism				
<input type="checkbox"/>	Student Goal-Setting	<input type="checkbox"/>	Communication				
<input type="checkbox"/>	Summing						
<input type="checkbox"/>	Vocabulary						
Agenda Items				Notes		Next Steps/Action Items	
To provide a repeatable process to understand the key student actions in a lesson and the ways to build the knowledge and skills needed to...				Notetaker:			
Internalize a Wit and Wisdom lesson plan?				Update ELA Materials Reviewed			
Develop key elements for successful implementation. Develop skills to support students in productive...				Geodesic Training for Grades K-3 September 16, 12-3pm			
es me feel like ...				Read article on Productive Struggle			
ing questions.							



What Have We Learned?

1. Be the voice of the teacher and the champion for the kids.
2. Learn, grow, and be receptive to feedback from coach and principal.
3. Have consistent meetings — proactive, scheduled, with feedback.
4. Create a visible, reflective structure and plan between administrators and coaches.
5. Be willing to pivot when challenges arise and advocate for yourself and your position as coach.
6. Be adaptable to change (eg. pilot test, administration, processes, etc.).
7. Don't assume anything, but remember the power of a conversation.



Larissa McCoy Mitti

and

Robyn Sullivan-Jackson

LETO HIGH SCHOOL'S WAY OF WORK

Student Achievement & Observation Data

LT & ILT

Instructional Priorities (IPs)

Support

Monitor

PLCs

PD

Right on Time Walkthroughs, IP Walkthroughs, Required Observations, & ILWs

Student Achievement on Common Formative & Summative Assessments

Lesson Rehearsal Protocol

Looking at Student Work Protocol

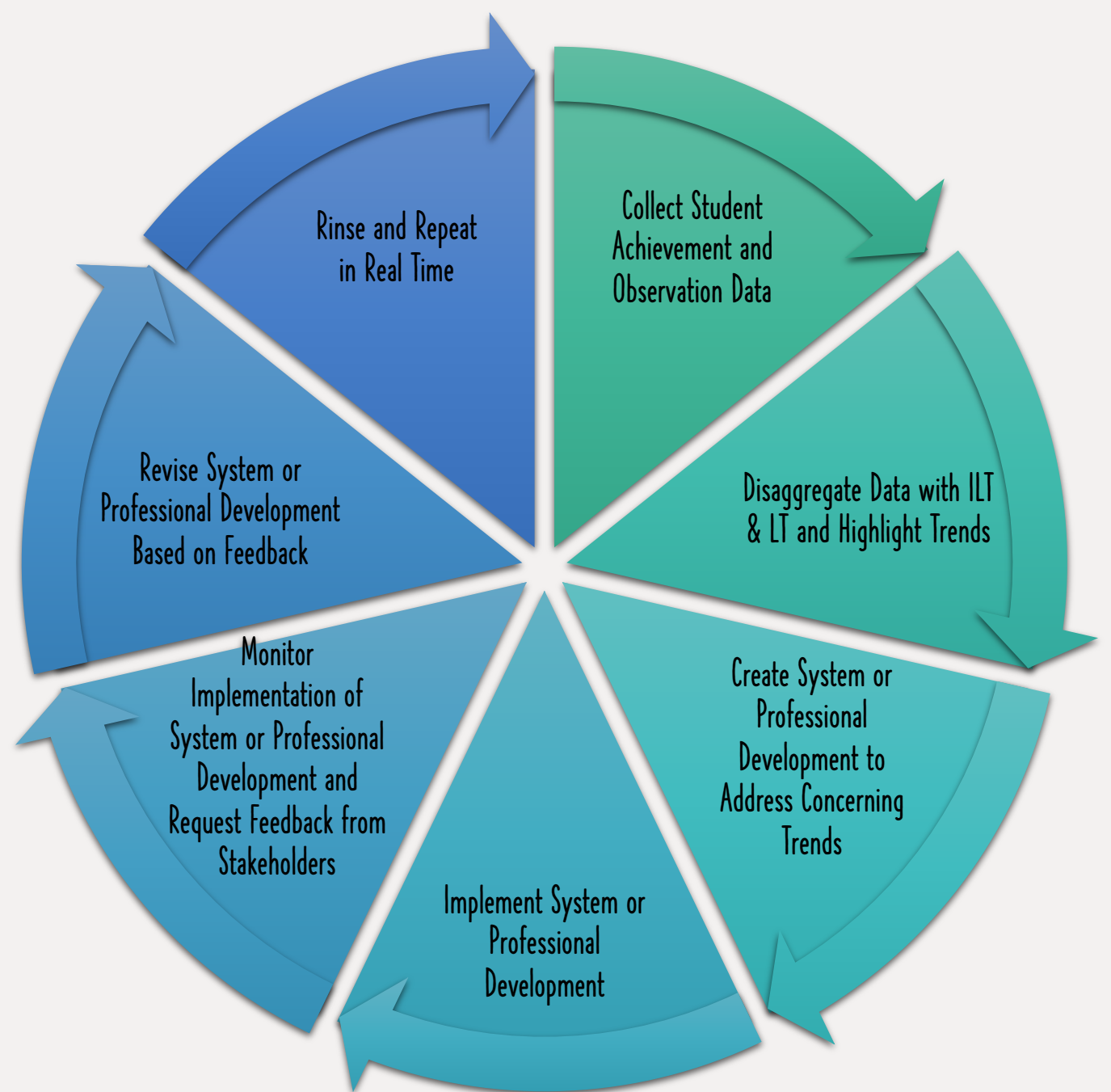
IP Specific Learning Walks

Differentiated PD & EdCamps

Coaching Cycles

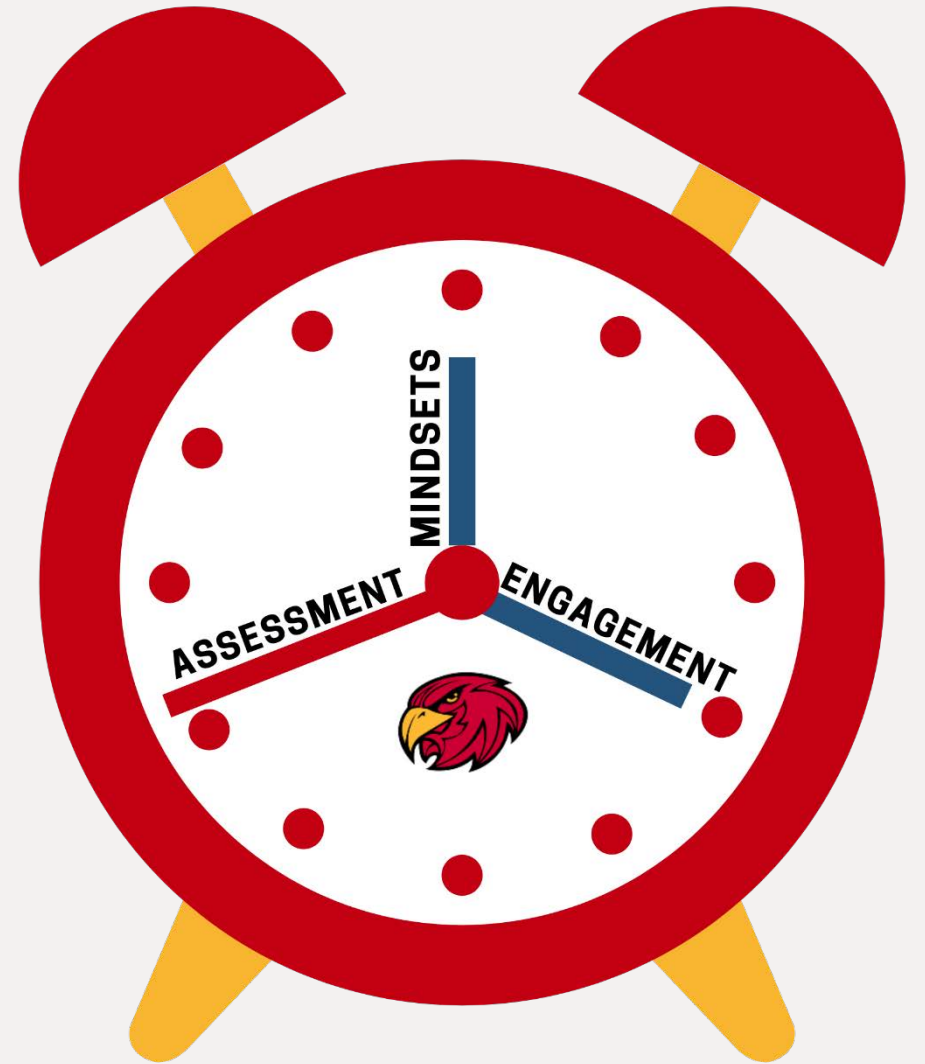
New Teacher Wingmen & Support Sessions

GENERAL PROCESS
FOR PD & SYSTEM
IMPLEMENTATION



INSTRUCTIONAL PRIORITIES

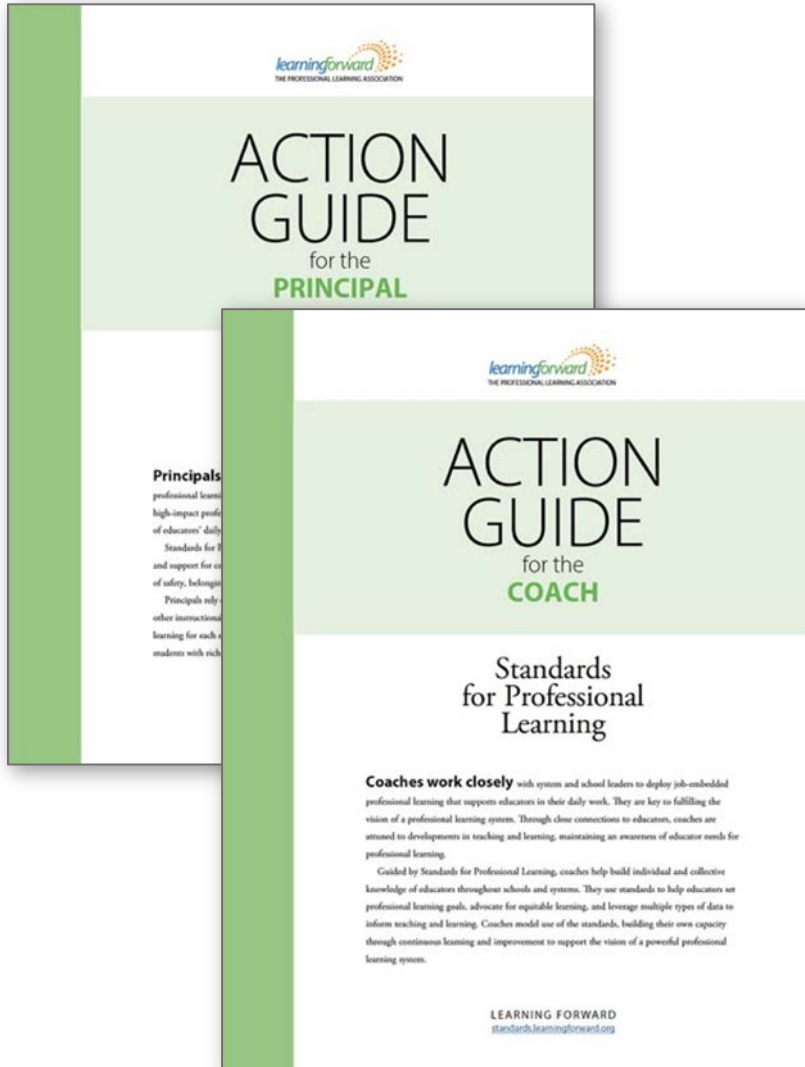
- ❑ Enhance student motivation by establishing academic goals and developing intrinsic mindsets
- ❑ Set high expectations for deep engagement and academic ownership using grade-appropriate assignments and consistent, collaborative communication
- ❑ Create and use authentic assessments that encourage student voice and honor targeted feedback



Discussion and Questions



Resources for Coaches and Principals



Role-based Action Guides

- <https://standards.learningforward.org/action-guides/>

Innovation Configuration Maps

- <https://standards.learningforward.org/ic-map-tool/coach/>

Coaching Resource Page

- <https://learningforward.org/coaches/>

The Learning Professional

- <https://learningforward.org/the-learning-professional>

Let us hear from you

**Please fill out our
post-webinar
survey**

<https://www.surveymonkey.com/r/R2LN3VW>



Mark your calendars

Standards Week April 24–28

- Daily webinars
- New tools
- Implementation strategies

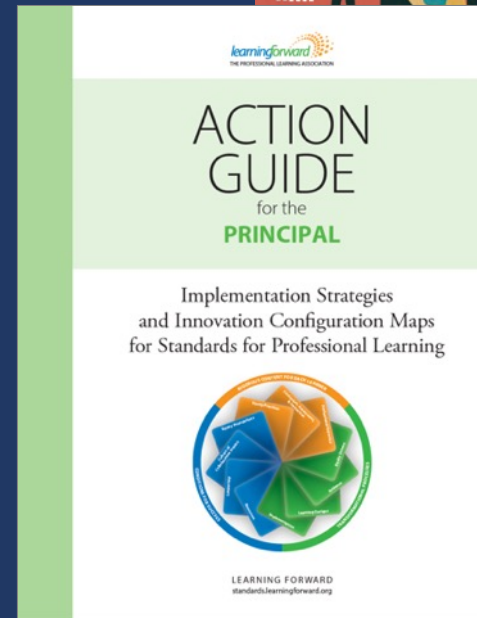
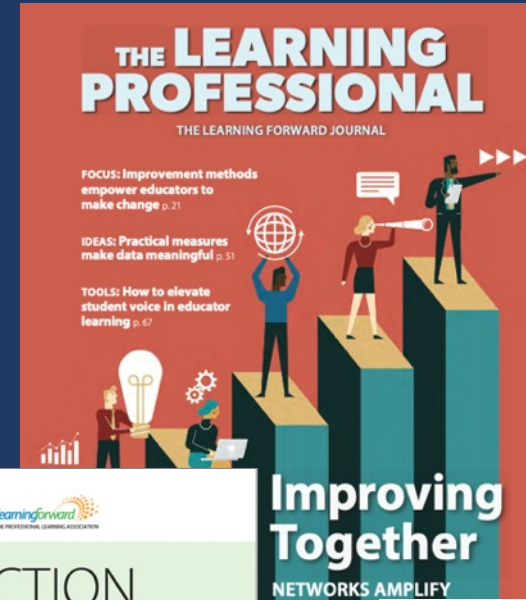
Online Course May 8-10

[Introduction to Standards for Professional Learning](#)

Online resources

Look for follow-up resources, including a recording of this webinar and slides:

- Read latest issue of [The Learning Professional](#)
- Check out the [Learning Forward blog](#)
- Use the [Action Guide for Principals](#)
- [Coaching Resources](#)



2023

Learning Forward's Annual Conference

Evidence into Action



December 3 – 6, 2023
Washington, DC
#LearnFwd23



Learning Forward memberships

- Get \$10 off any new Learning Forward membership
 - Use coupon code **LFWebinars**
 - **Visit** <http://learningforward.org/membership>
- * Code valid for new members only

The screenshot shows the Learning Forward website's membership page. At the top left is the Learning Forward logo, which consists of the text "learningforward" in a blue and green font, followed by a graphic of orange dots forming a curved shape. Below the logo is the text "THE PROFESSIONAL LEARNING ASSOCIATION". To the right of the logo is a navigation menu with the following items: ABOUT, ADVOCACY, STANDARDS, RESOURCES, SERVICES, PROGRAMS, BOOKSTORE, JOIN, and a search icon (Q).

Below the navigation menu are four membership options, each in a separate box:

- District Membership:** The box has a purple bottom bar with the text "Call for pricing." and a smaller note below it: "*Varies according to size of district".
- Comprehensive Membership:** The box has a green bottom bar with the text "\$159 per year (BEST VALUE)".
- Standard Membership:** The box has a blue bottom bar with the text "\$99 per year".
- Digital Membership:** The box has an orange bottom bar with the text "\$69 per year".

Thank you!

